



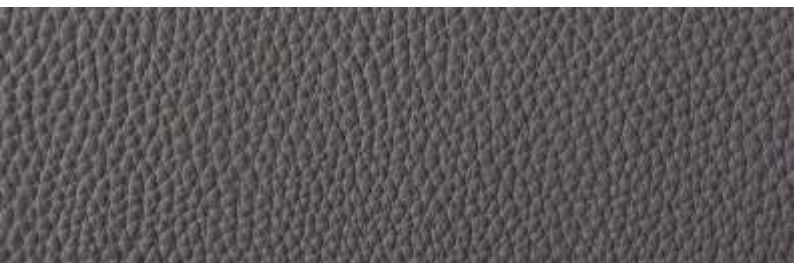
101



14



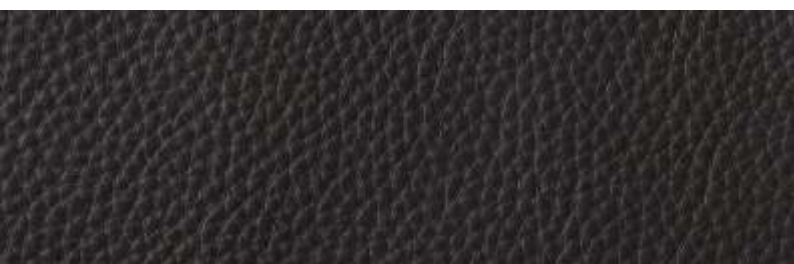
13



12



21



10



97



20

cierre
living in leather

COUGAR

MATERIALS
Leather

ANIMAL SPECIES
Cattle

FINISHING
Pigmented
corrected
grain

TANNING
Chrome
mineral

THICKNESS
1,8-2,0 mm



15

14

13

12

16

20

26

41

44

70

73

80

97

99

cierre
living in leather

NABUK

MATERIALS
Leather

ANIMAL SPECIES
European cattle

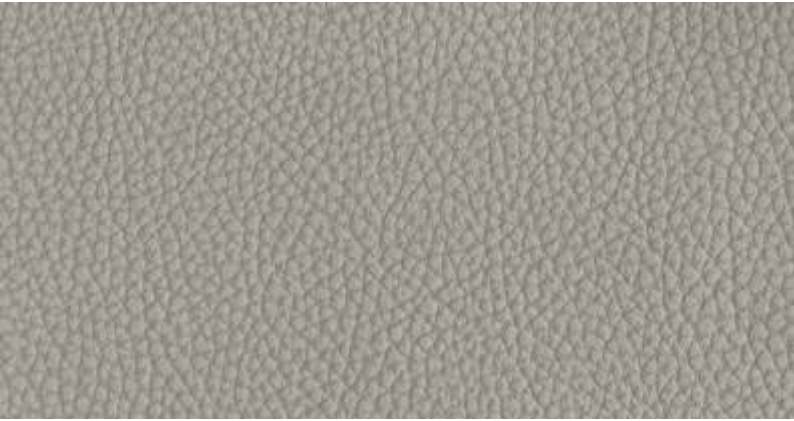
FINISHING
Nabuk grain

TANNING
Chrome
mineral

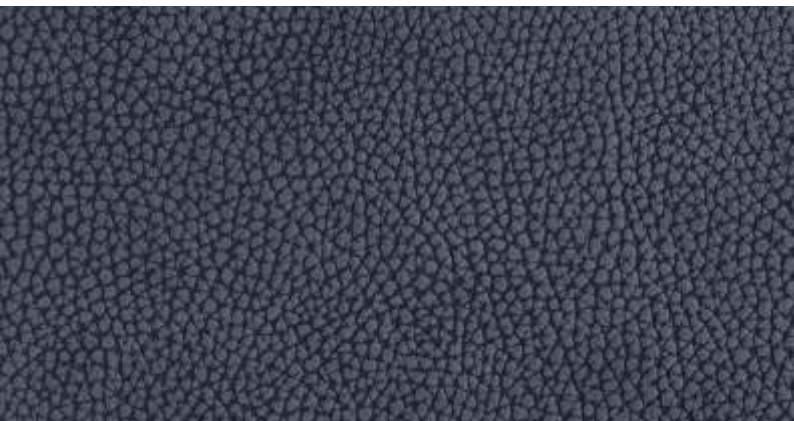
THICKNESS
2,2-2,4 mm



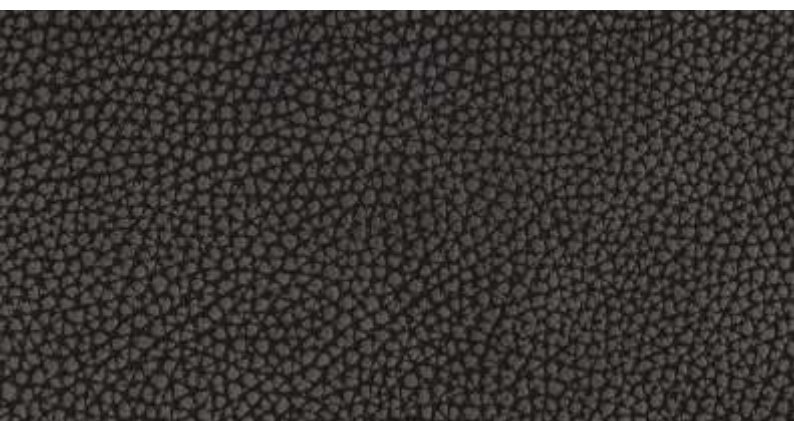
13



14



44



61



63

cierre
living in leather

NAPPALIN VINTAGE

MATERIALS
Leather

ANIMAL SPECIES
Cattle

FINISHING
Pigmented
corrected
grain

TANNING
Chrome
mineral

THICKNESS
1,3-1,5 mm



12

13

14

16

21

22

24

26

44

45

72

97

cierre
living in leather

NATURAL VELOUR

MATERIALS
Leather

ANIMAL SPECIES
European cattle

FINISHING
Nabuk grain

TANNING
Chromium
salts

THICKNESS
1,2-1,4 mm



10

cierre
living in leather

NECK



21

MATERIALS
Leather

ANIMAL SPECIES
European bulls



97

FINISHING
Full grain

TANNING
Chrome
mineral



99

THICKNESS
3,5-4 mm



01



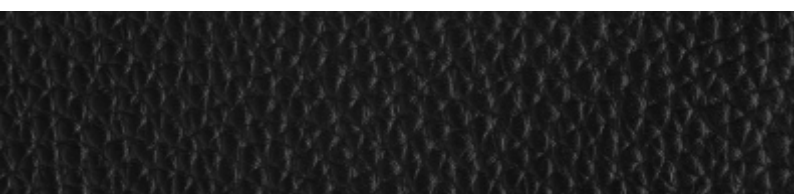
12



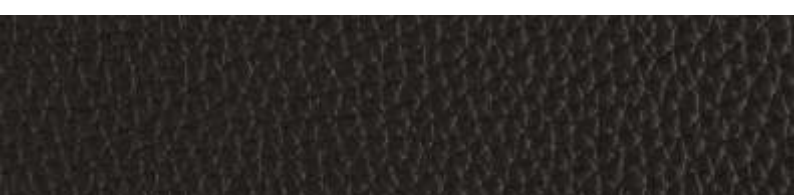
40



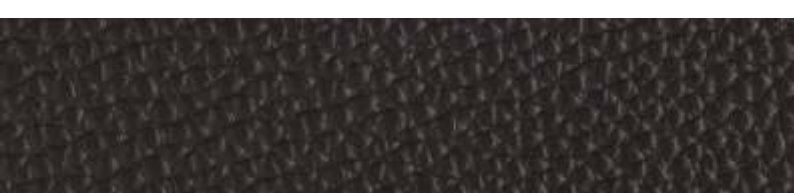
41



61



62



63



64



65



69



99



PIUMONE

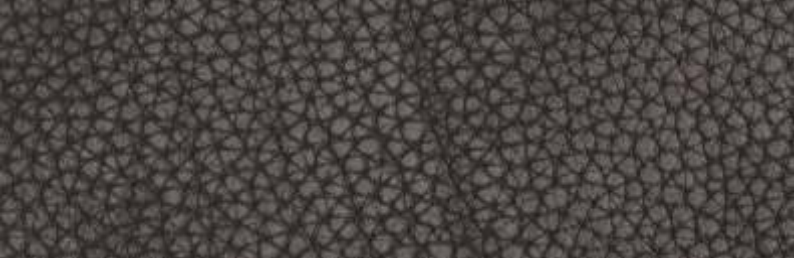
MATERIALS
Leather

ANIMAL SPECIES
European cattle

FINISHING
Full grain

TANNING
Chrome
mineral

THICKNESS
3+ mm



13



14



15



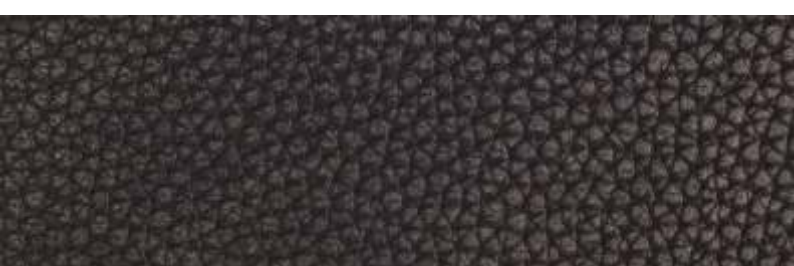
25



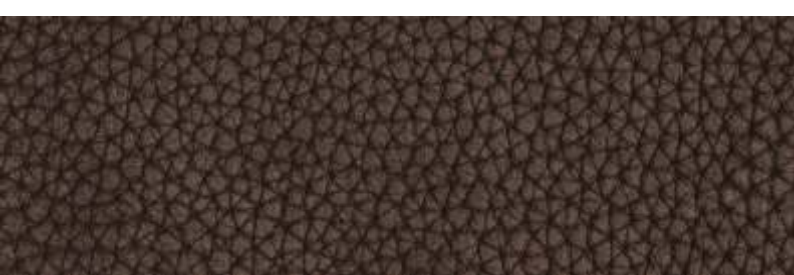
44



61



63



99

cierre
living in leather

PIUMONE VINTAGE

MATERIALS
Leather

ANIMAL SPECIES
European cattle

FINISHING
Full grain

TANNING
Chrome
mineral

THICKNESS
3+ mm



02

03

07

10

12

13

14

21

22

23

24

26

27

41

cierre
living in leather

ROMANA

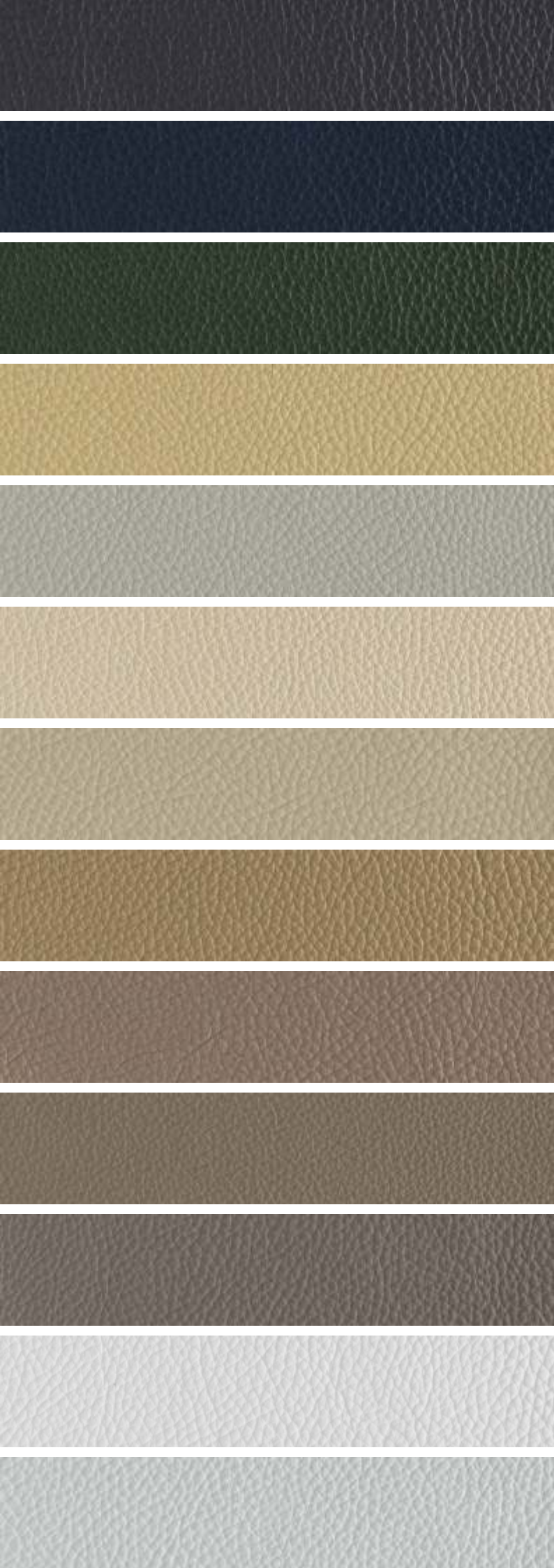
MATERIALS
Leather

ANIMAL SPECIES
Cattle

FINISHING
Pigmented
corrected
grain

TANNING
Chrome
mineral

THICKNESS
1,4-1,6 mm



61

65

72

82

90

91

95

96

97

98

99

101

102

cierre
living in leather

ROMANA

MATERIALS

Leather

ANIMAL SPECIES

Cattle

FINISHING

Pigmented
corrected
grain

TANNING

Chrome
mineral

THICKNESS

1,4-1,6 mm



10

cierre
living in leather

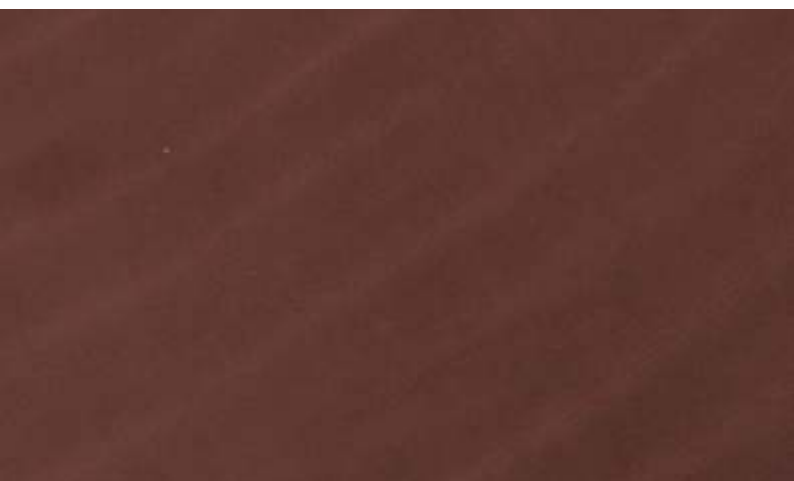
SETANIL



21

MATERIALS
Leather

ANIMAL SPECIES
European bulls



78

FINISHING
Anilin

TANNING
Mineral,
chromium
salts



97

THICKNESS
1,2-1,4 mm



10



14



21



72



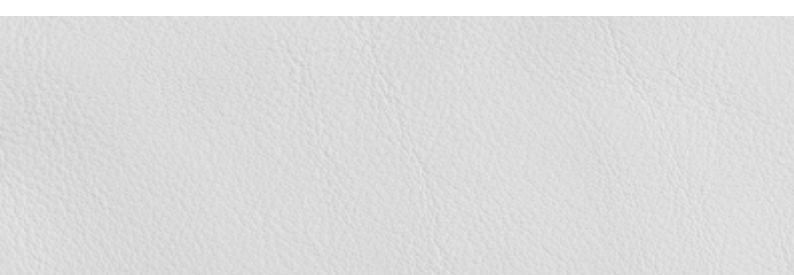
75



96



97



102

cierre
living in leather

SOFFIO

MATERIALS
Leather

ANIMAL SPECIES
European bull

FINISHING
Semi-aniline
leather

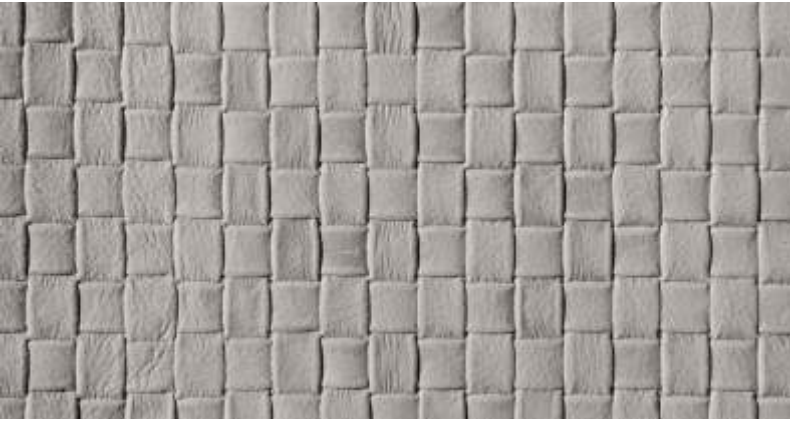
TANNING
Chrome
mineral

THICKNESS
1,4-1,6 mm



12

cierre
living in leather



14

**STAMPA
QUADRI**

MATERIALS
Leather



26

ANIMAL SPECIES
European cattle

FINISHING
Nabuk Grain



44

TANNING
Chromium
salts



72

THICKNESS
1,2-1,4 mm



10

cierre
living in leather



14

VINTAGE



21

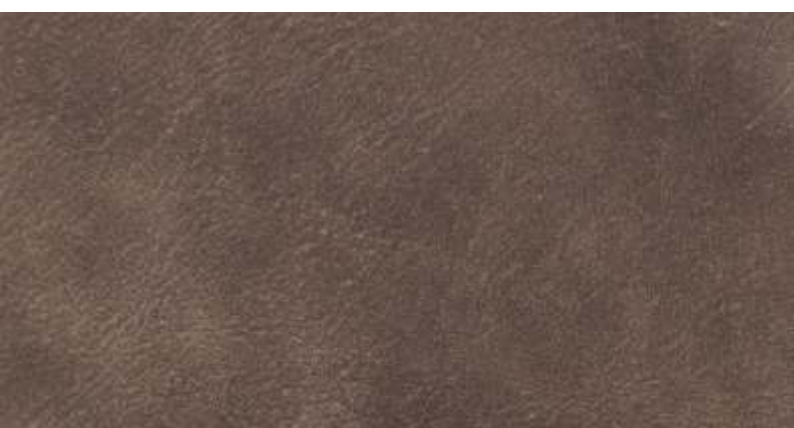
MATERIALS
Leather



75

ANIMAL SPECIES
European cattle

FINISHING
Vintage



76

TANNING
Chrome
mineral

THICKNESS
1,3-1,5 mm



10

12

13

14

21

22

26

40

72

75

96

99

101

102



WINDSOR

MATERIALS
Leather

ANIMAL SPECIES
Cattle

FINISHING
Pigmented
corrected
grain

TANNING
Chrome
mineral

THICKNESS
1,3-1,5 mm